

# DC Fast Power Stations

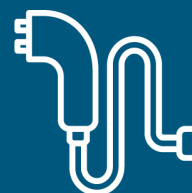
## Specification Sheet

This advanced charging system from EvoCharge is the optimal solution for commercial, fleet, public charging, and other charging sites where there is a need for multiple charging outputs.

- EvoCharge Power Stations are connected to EvoCharge Power Cabinets
- Product options available to connect up to 6 or 8 charging outputs (ports) to each power cabinet
- Single or dual port options
- Charging Power of up to 280kW per port
- Spring support cable management system as standard
- 7" touch screen display
- RFID reader (ISO 14443A)
- Charging status indicator LEDs
- IP54 enclosure operates between -22°F and 122°F (-30°C and 50°C)
- Payter payment terminal option available



Up to  
**280kW**  
of charge power  
per port



Up to **8**  
charging outputs

## Electrical

Connector Type	CCS1 and CHAdeMO options
Voltage	Max. 1000 VDC
Standby power	25 W

## Environmental Specifications

Operating temperature	-22° to 122°F (-30 to 50°C)
Current derating	Charging cable pin temperature limits charging current. For other limiting variables, see the applicable Power Cabinet datasheet.
Maximum altitude	2000 m (without altitude derating)
Altitude derating	-1.4% of max. charging current per 100 m (above 2000 m)
Storage temperature	-40°F to 140°F (-40 to 60°C)
Enclosure	IP54, IK10
Ambient air humidity	< 95% relative humidity

## Safety and Compliance to Standards

ETL Listed

IEC 61851-1  
IEC 61851-23  
IEC 61851-21-2  
IEC 62196-3

UL 2202  
UL 2231-1  
UL 2231-2

CSA Std. c22.2 No. 281.2  
CSA Std. c22.2 No. 107.1

EMC Class A FCC Part 15

Charging cable temperature monitoring

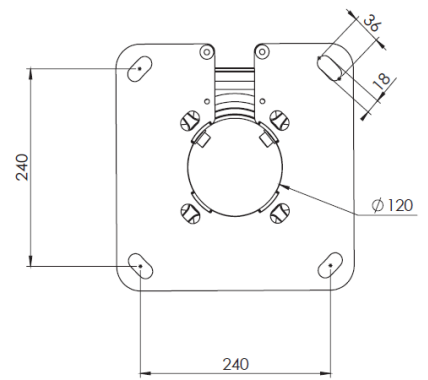
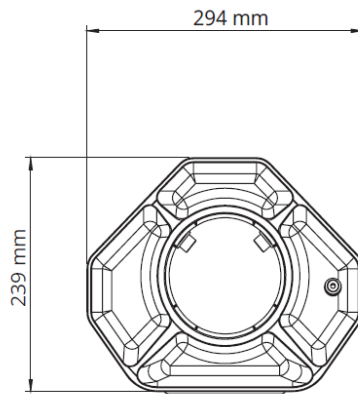
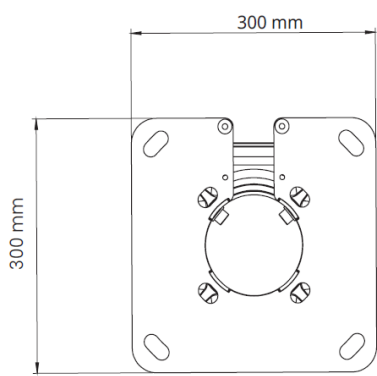
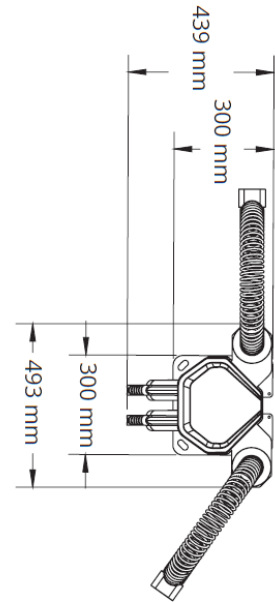
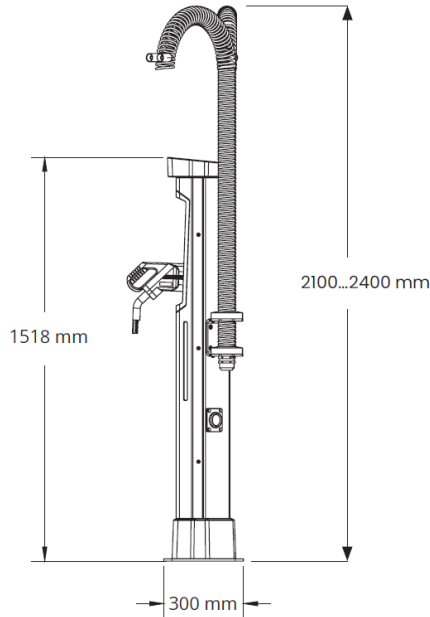
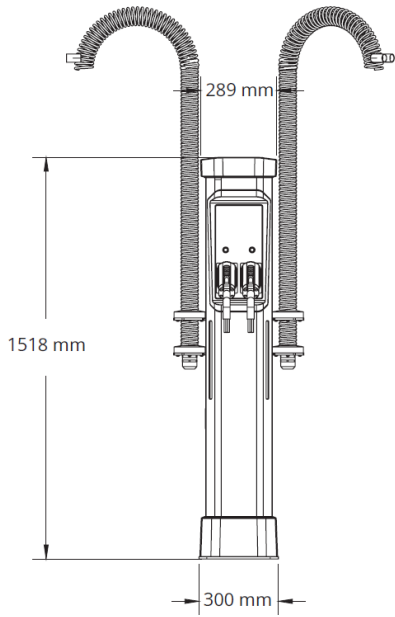
## Connections & Protocols

WiFi	802.11 b/g/n (2.4/5 GHz)
Cellular / GPS	LTE-FDD, LTE-TDD, WCDMA, GSM
Ethernet	RJ45, IEEE 802.3 / 802.3u
OCPP	1.6j / 2.0.1
Electrical Connections	<p>DC power cable per vehicle connector (terminals 2 x 95 mm<sup>2</sup> / 2 x 3/0 AWG)</p> <p>Control cable 24 VDC</p> <p>Control bus cable</p> <p>Max cabling distance between the Power Cabinet and Power Stations: Up to 262 feet/80 meters</p>

Part Number	Vehicle Connector	Cable Length	Max Charging Current	Charging Power at 400VDC	Charging Power at 800 VDC (w/ C800)	Weight
EVDPS15	CCS1	16ft (5m)	200A	80kW	160kW	145.5lbs (66kg)
EVDPS25	2 x CCS1	16ft (5m)	2 x 200A	2 x 80kW	2 x 160kW	218.3lbs (99kg)
EVDPS35	CCS1 & CHAdeMO	16ft (5m)	200A & 125A	80kW & 50kW	160kW & 100kW	211.6 lbs (96kg)
EVDPS17	CCS1	23ft (7m)	200A	80kW	160kW	149.9lbs (68kg)
EVDPS27	2 x CCS1	23ft (7m)	2 x 200A	2 x 80kW	2 x 160kW	227.1lbs (103kg)
EVDPS37	CCS1 & CHAdeMO	23ft (7m)	200A & 125A	80kW & 50kW	160kW & 100kW	218.3lbs (99kg)
EVDPS45	CCS1	16ft (5m)	300A/350A*	120kW/140kW	240kW/280kW	218.3lbs (99kg)
EVDPS55	CCS1 & CHAdeMO	16ft (5m)	300A/350A* & 125A	120kW/140kW & 50kW	240kW/280kW & 100kW	284.4lbs (129kg)
EVDPS47	CCS1	23ft (7m)	300A/350A*	120kW/140kW	240kW/280kW	227.1lbs (103kg)
EVDPS57	CCS1 & CHAdeMO	23ft (7m)	300A/350A* & 125A	120kW/140kW & 50kW	240kW/280kW & 100kW	295.4lbs (134kg)

\* 350 A (rated) in +25°C/+77°F. Requires 2 output terminals from Power Cabinet.

# Mechanical Dimensions



Footprint of standard surface mounting flange

Footprint with mounting pipe